

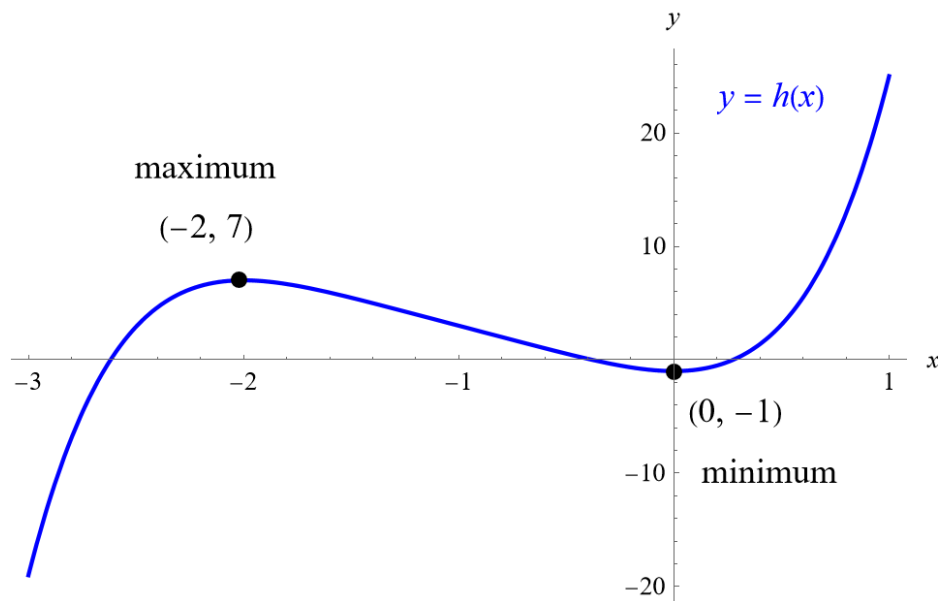
Exercise 36

For the following exercises, use a graphing utility to estimate the local extrema of each function and to estimate the intervals on which the function is increasing and decreasing.

$$h(x) = x^5 + 5x^4 + 10x^3 + 10x^2 - 1$$

Solution

Below is a graph of $h(x)$ versus x .



The function is decreasing on $(-2, 0)$, and the function is increasing on $(-\infty, -2) \cup (0, \infty)$.